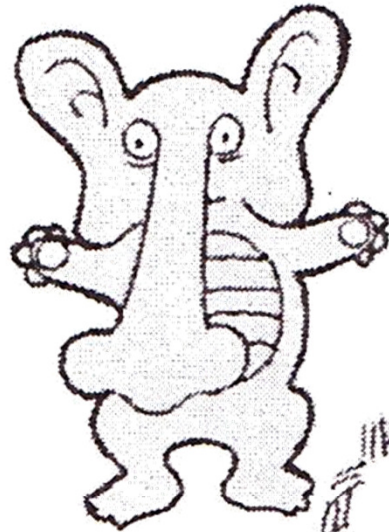
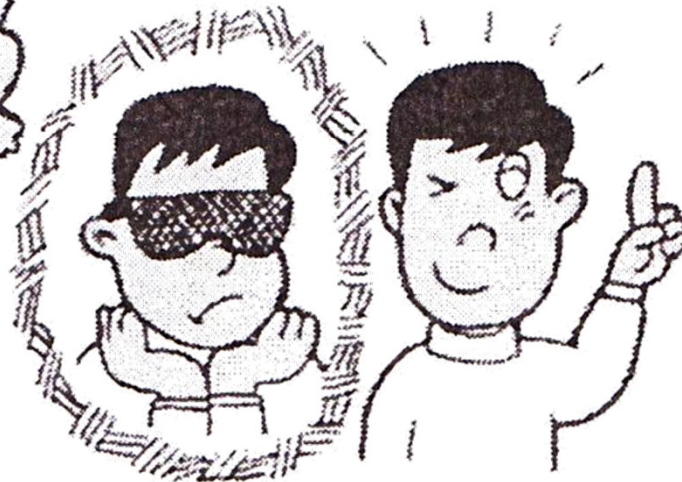
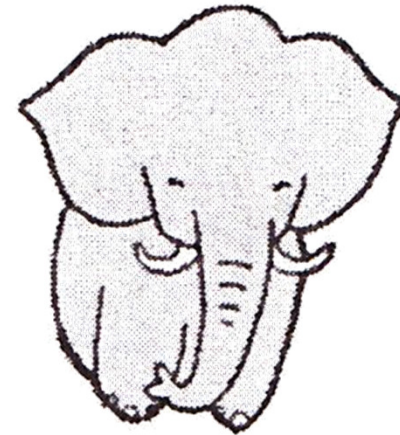


* *Visual Management*

* Gestione Visiva



Un elefante ha un lungo
naso, due grandi orecchie
e un corpo robusto.



Vedere per capire !

* Gestione Visiva



1. Obiettivi e Risultati

2. Produttività, Avanzamento e Problemi

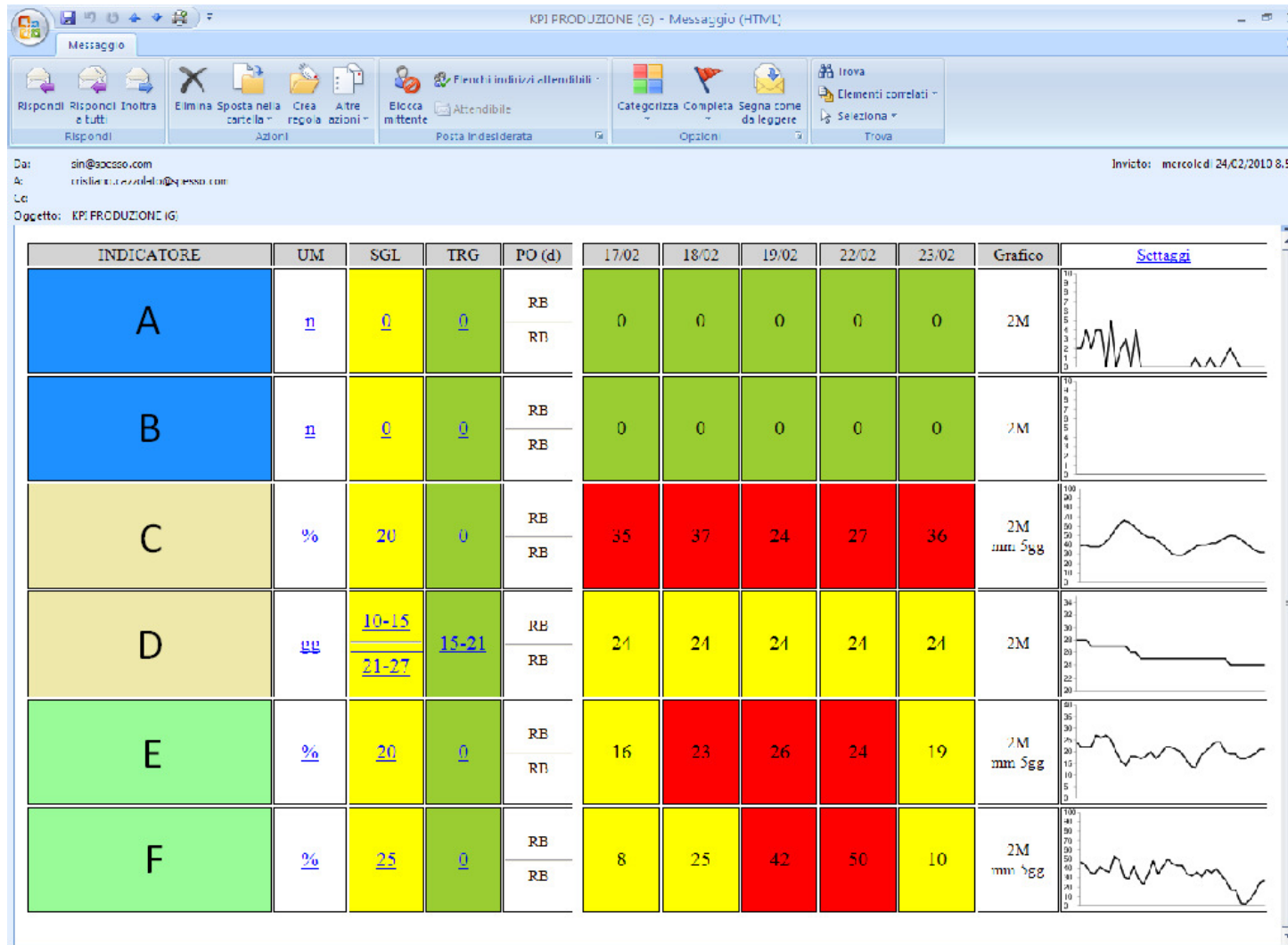
3. Locazioni, Prescrizioni, Qualità e Sicurezza



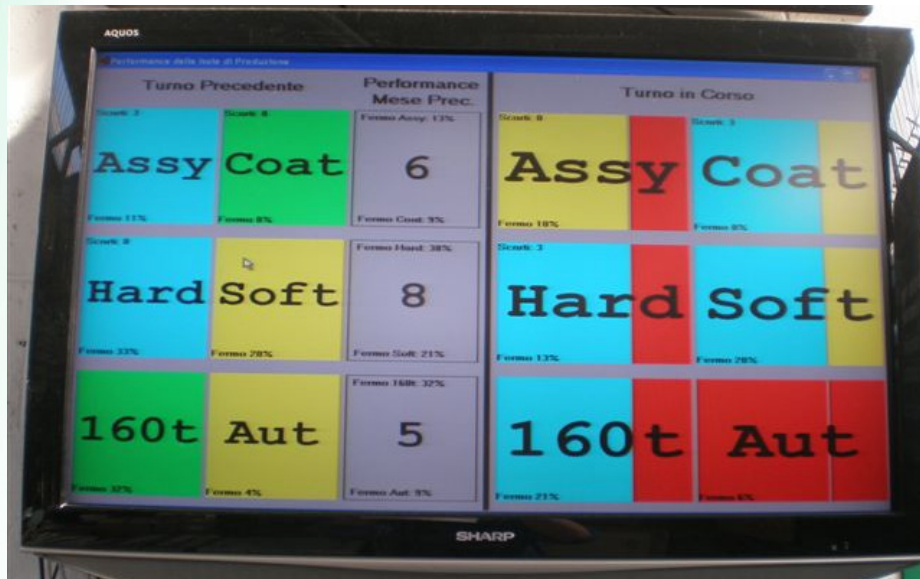
* Gestione Visiva



* Gestione Visiva



* Gestione Visiva



* Gestione Visiva



* Gestione Visiva



* Gestione Visiva



40 bar



60 bar



30 bar



40 bar



60 bar



30 bar



40 bar

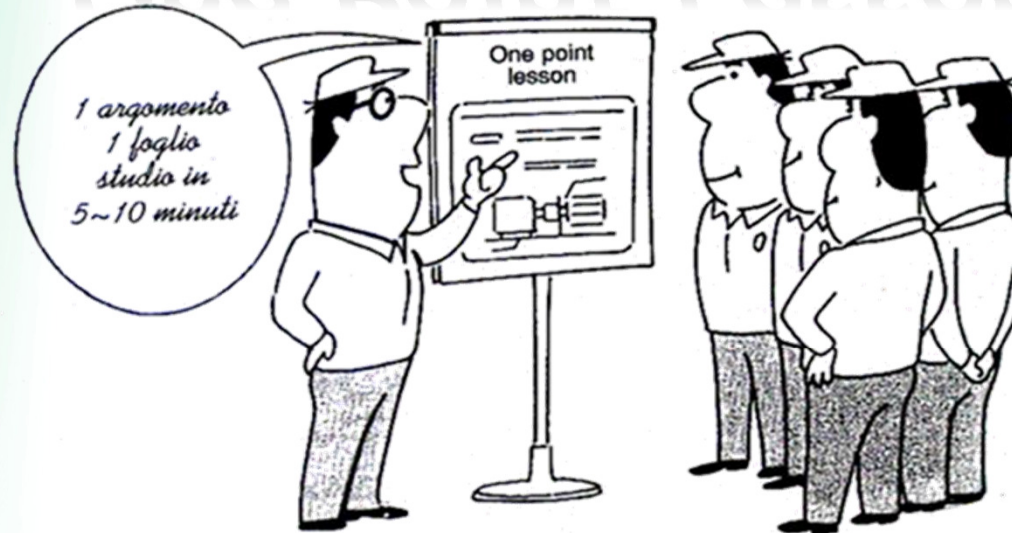


60 bar

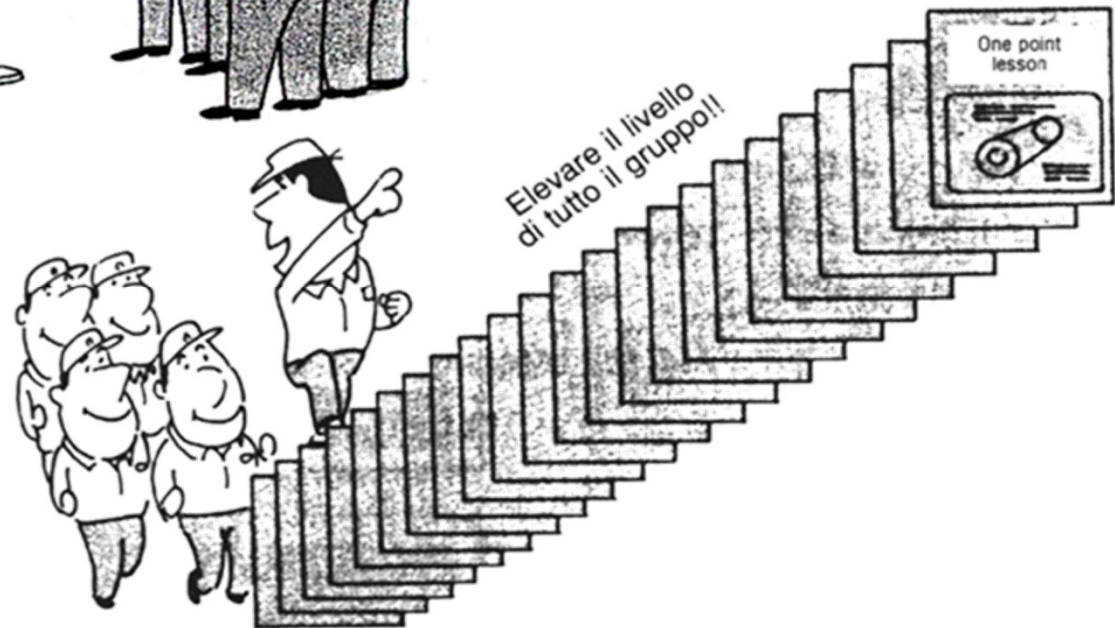


30 bar

* One Point Lesson



Immagini tratte da *Applichiamo il TPM*, JIPM/JMAC, 1991



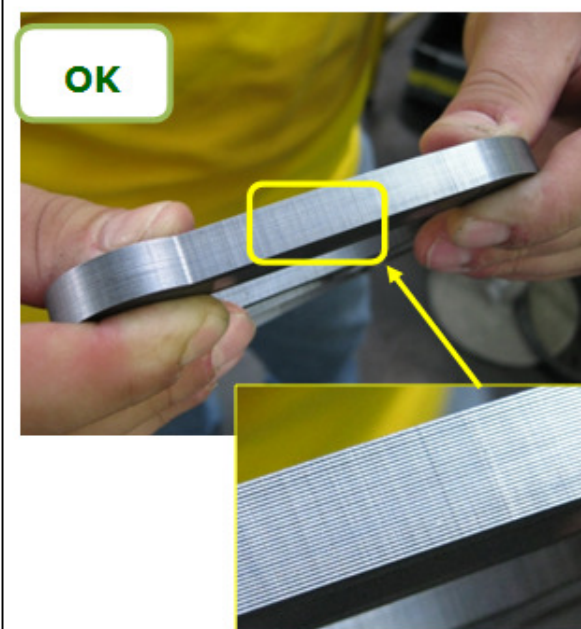
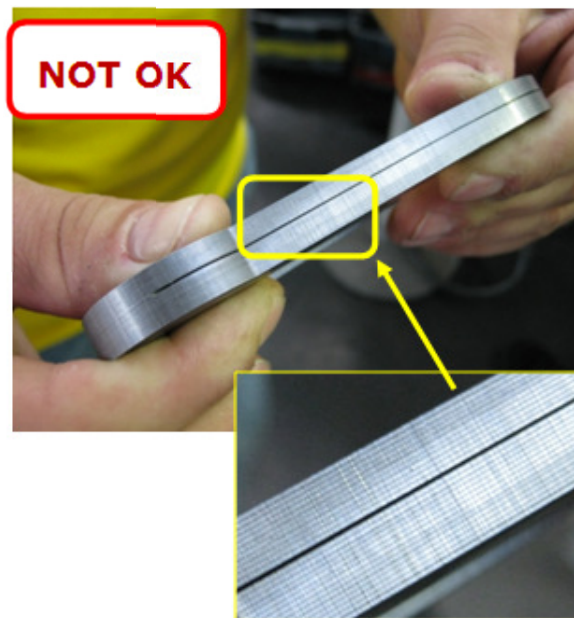
* One Point Lesson

Esempio

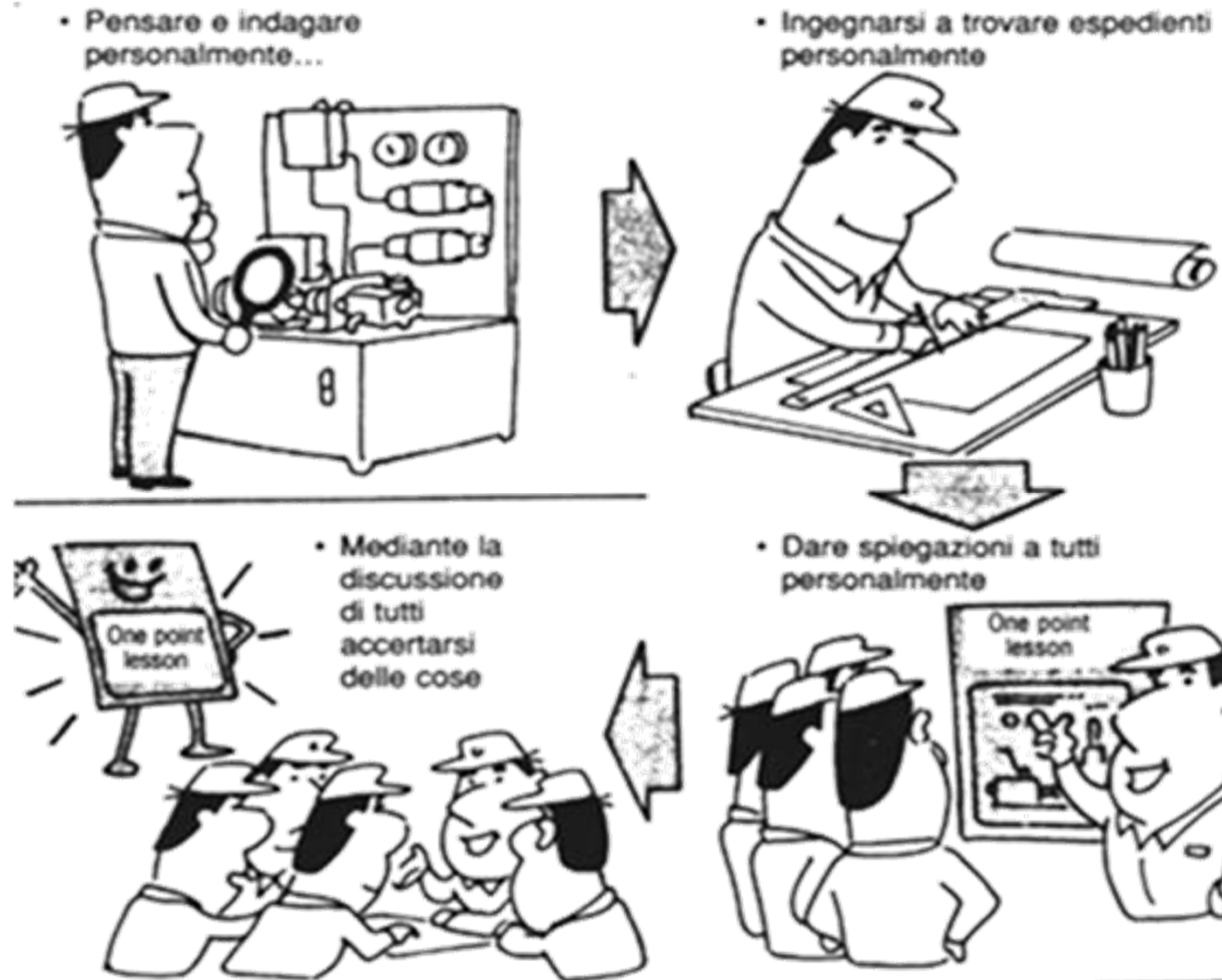
O.P.L.
ONE POINT LESSON

PAG. 1 DI 1
Rev.01 del 17/05/10

04/10 – CONTROLLO VISIVO PROFILO



* One Point Lesson



Immagini tratte da *Applichiamo il TPM*, JIPM/JMAC, 1991